

Friday 29th November 2024



## Coming Up

We have a very busy half term ahead. Please keep checking your emails and notifications for updates.

New afterschool clubs start in January - please ensure you have booked a place as they are filling up fast!

## Update from the Head

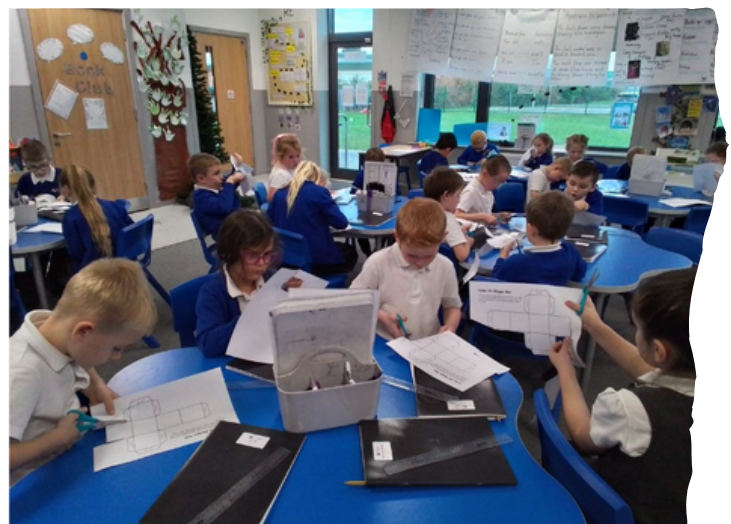
Hello everyone,

It is a busy time of year with lots of preparations taking place! This week the academy has been full of wonderful performance practices and Christmas cheer.

This week we recognised UK Disability Awareness Month. We looked at the history of how people with disabilities have been treated and talked about the importance of treating everyone with kindness and respect.

In the spirit of Christmas, next week we will all be taking part in the 'Elf Run' and hopefully children will be currently collecting lots of sponsors to raise funds for The Prince of Wales Hospice. Last year during the Reindeer Run we raised over £900! We are also looking forward to our pantomime visit next week of 'The Incredible Christmas Story'.

Have a lovely weekend,  
Mrs Cooke



## Diary Dates

### Dates For Your Calendar



#### **Inset days for academic year 2024-25**

- Friday 10th January 2025
- Monday 2nd June 2025
- Monday 21st July 2025
- Tuesday 22nd July 2025

- 04.12.24** - Pantomime Visit
- 05.12.24** - Elf Run - Prince of Wales Charity
- 06.12.24** - Y5/6 Gym & Dance Festival
- 09.12.24** - Whole School Christingle Service in Church
- 10.12.24** - EYFS Christmas Performance 9.30am
- 11.12.24** - Y1, Y2, Y3 Christmas Performance 9.30am
- 12.12.24** - Y4, Y5, Y6 Christmas Performance 9.30am
- 12.12.24** - Christmas Jumper Day
- 12.12.24** - School Christmas Dinner
- 12.12.24** - School Christmas Fair 3pm
- 16.12.24** - Christmas Craft Morning Y5 & Y6 9.30am - 10.30am
- 17.12.24** - Christmas Craft Morning Y3 & Y4 9.30am - 10.30am
- 18.12.24** - Christmas Craft Morning Y1 & Y2 9.30am - 10.30am
- 20.12.24** - Christmas Craft Morning EYFS 9.30am - 10.30am
- 20.12.24** - Christmas Jumper and Class Christmas Parties PM
- 20.12.25** - Break up for Christmas

# Early Years



Another lovely week for Nursery. Nursery are continuing to learn their new story, Dear Santa. In Phonics the the children have been learning about rhyme. I wonder if they can tell you any silly rhymes that they have been learning. In Maths the children have been exploring patterns using natural objects. In PE the children have been practicing passing a ball to a partner.

Reception continue to work hard in all learning areas, especially phonics. We have been learning ee, ai, igh, oa this week and using their phonic knowledge to write simple words and captions. I wonder if they can practice at home?

In P.E., the children are practicing passing balls to a partner and team games. Maths has continued to be a highlight for the class. We have been learning about shapes with 4 sides.

**Miss Sheppard and Miss Mooney**



## Year 1



In Maths, we have been learning all about 2D shapes. We have been recognising and naming 2D shapes, looking at the properties of the shapes to help us.

In Science, we have investigating different materials to see if they are waterproof or absorbent. We worked as a team to test different materials to find out which material would be the best to wear if it was raining outside.

In Writing, we have written some amazing hot writes all about the adventures of the Gruffalo's child! We made sure to add interesting sentence openers and use adjectives to describe the mouse.

**Miss Scott**



## Year 2



In computing this week, we have been practicing taking photographs on our tablets and learning how to take a good photo. We have been learning how to use our tablets portrait and landscape, making sure we have the subject in the correct position.

In writing, we have finished our innovations and they have been amazing to read! Next week we will be writing our hot tasks for a warning story and making sure that we are including verbs, adverbs and lots of adjectives!

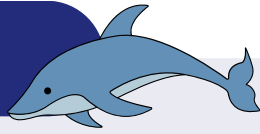
We can't wait for next week for all of the fun things we have planned!

**Miss Colley & Mrs Lilley**





## Year 3



Once again we have had a tremendous week in year 3. In Science we are continuing with our animals including humans topic and looking at our skeleton and what it does. In writing we are continuing to build our skills for our hot write story about overcoming the monster and in maths we are working hard to master subtracting 10s across 100 and exchanging.

This week we have also earned our first delta stars card for our visit to Hull Museums for our Stone Age experience.

**Reminder: PE is on Thursdays. Could all children please have their kit on this day!**

Mrs Parish



## Year 4



What a fantastic week in year 4

This week we visited Eureka as part of our science topic 'The digestive system'. We really enjoyed the experience. We investigated all the areas then had our own class workshop on 'The chew to the pool!' This was very interesting!

In class we have been very busy learning to multiply numbers together and in writing we have been working more on keeping our readers on the edge of their seats with our stories.

Please remember our PE days are Thursday and Friday this half term.

Mrs Cutler



## Year 5



Another great week in year 5!

We have been finishing off our suspense story this week, and it has been great to see what the children have been coming up with!

We've delved deeper into what Earthquakes are, looking at the different magnitudes and the destruction they bring with them.

We've also started rehearsing for our Christmas performance, which we cannot wait to show you!

In forest schools we have been learning how to use a flint and steel to create fire, which the children got very excited about once they made their first fire!

Miss Slater



# Year 6



P.E this half term is every Tuesday and Wednesday. .

This week in writing the children have really enjoyed creating their own portal stories and have worked really hard on these.

In Art this week, the children have been learning about George Marsden's water colour and oil paintings that he created whilst he was on Shackleton's expedition to Antarctica.

The children have been gripped in reading sessions as we are now at a part in our class read (Black Powder) where all the things we have been told previously suddenly make sense.



Miss Milton

## Safeguarding



Ensuring our pupils are safe and well looked after is our key priority.

**Miss C Milton:**  
**Designated Safeguarding Lead**

**Mrs C Carratt:**  
**Deputy Safeguarding Lead**

**Mrs L Cooke:**  
**Deputy Designated Safeguarding Lead**

All staff have received Safeguarding training to ensure that they can recognise signs and symptoms of abuse and also how to report/act if a disclosure is made.

Concerns about the safety or welfare of a child? Contact us: 01977 722486

Out of hours contact number:  
03458 503503

For more information:  
<https://www.elacademy.org.uk/knowledge-base/safeguarding/>

**Mrs J Simons: Thrive Practitioner**

**Mrs H Cutler: SENDCO**

## Attendance



### Attendance matters.

Coming to school on time, every day is vital to achieving the best possible outcomes as well as learning good habits which will benefit everyone in the future.

EYFS		96%
Y1		92%
Y2		95%
Y3		97%
Y4		98%
Y5		93%
Y6		91%



## Providing children with positive experiences and strategies to embed emotional resilience.

We use The Thrive Approach as a whole school strategy to promote positive mental health and wellbeing of which when this is present in children's lives it has been proven to improve their attendance, behaviour and attainment.

This allows our children to become confident, curious, creative and capable, therefore opens doors to a bright future for our children.

If you would like any more information, please visit:  
[www.elacademy.org.uk/thrive-mental-health-wellbeing/](http://www.elacademy.org.uk/thrive-mental-health-wellbeing/)

**Mrs J Simons**  
Lead Thrive Practitioner



Lets go on a treasure hunt!

On the crisp autumn days why not take part in a treasure hunt for all the family to enjoy.



**For information regarding mental health support & advice, please visit the below links:**

<https://wf-i-can.co.uk/u13/home/>

<https://www.compass-uk.org/services/wakefield-children-and-young-peoples-emotional-health-and-wellbeing-service/>

## Inclusion & SEND



At England Lane Academy we are committed to providing an inclusive education for all our children. This means that any child who may have Special Educational Needs or a Disability (SEND) will have access to additional or specialist support throughout their life at our academy. All teachers are responsible for every child in their care, including those with special educational needs and disabilities.

The Wakefield local offer website has a section dedicated to 'things to do'

A local event is the 'Elephant Club'. A weekly stay and play session for families of children with Special Educational Needs. For more information see the link below.

This is one of many events happening weekly across the district. For more events please see the link below.

<https://wakefield.mylalloffer.org/>

**For further support, please contact a member of the Inclusion team:**

- Mrs H Cutler - SENDCo
- Mrs J Simons - Lead Thrive Practitioner
- Miss C Milton - Designated Safeguarding Lead & Assistant Principal
- Mrs C Carratt - Deputy Designated Safeguarding Lead
- Mrs L Cooke - Head of Academy & Deputy Designated Safeguarding Lead