

Friday 17th January 2025



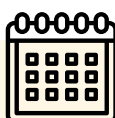
## Coming Up

Year 2 School Trip to Pontefract Caste is next week.

Please make sure you have sent in your consent form and payment. Thank you

## Diary Dates

### Dates For Your Calendar



#### Inset days for academic year 2024-25

- Monday 2nd June 2025
- Monday 21st July 2025
- Tuesday 22nd July 2025

**21.01.25** - Y2 Visit to Pontefract Castle

**28.01.25** - Young Voices

**03.02.25** - Children's Mental Health Week

**07.02.25** - World Number Day

**07.02.25** - Multi Sports Festival

**11.02.25** - Safer Internet Day

**14.02.25** - Break up for half term

## Update from the Head

Hello everyone,



At England Lane Academy children have the opportunity to earn community beads for acts of kindness they have done in or out of school. When we reach 200 beads, we make a donation to a charity chosen by the Academy Council.

Over the last half term we managed to collect two hundred and thirteen beads! We invited Simon from Sam's Army's Mission to come in to school to receive a donation.

Sam's Army have been in school to help us increase awareness of the dangers associated with swimming in open waters. All their funds go towards providing life saving equipment in and around our open waters.

A big well done, and thank you, to every child who earned a community bead last half term. Our Academy Council will be deciding on our next charity and I look forward to handing out many more community beads.

Welcome to Miss Wheeldon who joined our academy this week. Miss Wheeldon is our new afternoon Office Administrator. Our children have been fabulous in making her feel welcome.



Have a lovely weekend,  
Mrs Cooke



# Early Years



Nursery have had a wonderful week and the new starters are settling in wonderfully. Nursery have begun to learn their new story in literacy, The Little Red Riding Hood, beginning to learn their new story with actions. In Maths the class have been counting to 3. Nursery have been learning about their new inspiring person Nadiya Hussain and have thoroughly enjoyed making sausage rolls from one of Nadiya's recipe books.

Reception have been fully focused on learning this week. In phonics we continued to learn Phase 3 graphemes and touched on Phase 4. We are concentrating on writing sentences and remembering a capital letter and full stop and not forgetting finger spaces. Can your child remember the things to include when writing a sentences? In Maths children have been consolidating their learning of numbers to 5, including, subitising and looking at the composition if number to 5.

**Miss Sheppard and Miss Mooney**



## Year 1



In Science this week Year 1 have been learning about different parts of our bodies, we then moved on to understanding our different senses. We drew the person sitting next to us and labelled the five sense.

In Writing we have learnt our new story map for 'The Queen's hat', and through this we have been building a bank of adjectives, verbs with suffix's and new vocabulary to use in our innovations next week.

In maths we have been continuing to understand place value for numbers to 20. We then have started to identify numbers to 20 in a number line.

**Miss Scott**



## Year 2



This week in science we have been learning all about life cycles! We concentrated on the life cycle of a caterpillar and watched how it turns into a butterfly. We then had our own turn at creating a butterfly life cycle and we had some amazing creations!

In writing this week, we have been looking at the story of Peter Pan! The children have been amazing at writing some brilliant expanded noun phrases and using a variety of verbs and adverbs. Well done Year 2!

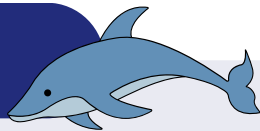
A quick reminder that we have our trip to Pontefract Castle on Tuesday 21st January. The consent form that was sent out on the letter must be completed by this date. Thankyou.

**Miss Colley & Mrs Lilley**





## Year 3



We have had an excellent week this week in year 3.

This week the children have taken part in an Emile spelling competition and it has been wonderful to see the children helping and encouraging each other.

This week the children have also taken part in RE workshops and have explored artefacts from different religions.

In writing we are creating our own fantasy, quest tale and building up suspense to grip the reader.

Please remember to wear your school jumper cardigan and school shirt tomorrow with any trousers of your choice. You will also need a change of footwear and a warm coat, hat, scarf and gloves.

**Mrs Parish**



## Year 4



A lovely week in year 4!

In geography we have started looking at Greece, where it is in the world and what its environment is like. In Art we have started making sculptures. In maths, we started looking at fractions in particular wholes and parts. We have started looking at verbs in writing and how we can use them to create a visual image in the readers head.

Next week is the year 4 spelling competition, we are very excited to participate and hopefully we place in league.

**Mrs Cutler**



## Year 5



Another great week in Year 5.

We have been absolutely loving the space topic so far! We have currently learnt about the Earth being a sphere, the planets in the solar system and how far away each planet is from the sun, and how they orbit the sun.

In PE we have started learning about the HAKA, and how we can learn the dance. The children have also learnt how the Haka has been used with the New Zealand rugby team as part of an intimidation tactic.

We are looking deeper into our suspense story and what parts we need to include to make a great suspense story.

We have also had a workshop on Islam ahead of World Religion Day on Monday

**Miss Slater**



# Year 6



P.E this half term is on a Wednesday and Thursday.

The children have had a great week.

In Science we have been learning about different types of circuits and the advantages and disadvantages of these.

In History, we have been looking at how recounts from the war can give us an insight into what war was like for those involved.

In R.E, we have been looking at how religions may have different beliefs but some can be the same i.e. Community, sense of belonging etc. and the importance of this.

In Computing, the children have been looking at Micro bits.

In Maths, we have been looking at Ratio and Algebra.

**Miss Milton**



## Safeguarding



Ensuring our pupils are safe and well looked after is our key priority. If you have concerns regarding your child please make an appointment to see the class teacher.

**Miss C Milton:**  
**Designated Safeguarding Lead**

**Mrs L Cooke:**  
**Deputy Designated Safeguarding Lead**

**Mrs C Carratt:**  
**Pastoral Officer**

All staff have received Safeguarding training to ensure that they can recognise signs and symptoms of abuse and also how to report/act if a disclosure is made.

Concerns about the safety or welfare of a child? Contact us: 01977 722486

Out of hours contact number:  
03458 503503

For more information:  
<https://www.elacademy.org.uk/knowledge-base/safeguarding/>

## Attendance



### Attendance matters.

Coming to school on time, every day is vital to achieving the best possible outcomes as well as learning good habits which will benefit everyone in the future.

EYFS



96%

Y1



92%

Y2



94%

Y3



96%

Y4



96%

Y5



95%

Y6



95%



@EnglandLaneMain



01977 722486



[www.elacademy.org.uk](http://www.elacademy.org.uk)



[info@elacademy.org.uk](mailto:info@elacademy.org.uk)

## Providing children with positive experiences and strategies to embed emotional resilience.

We use The Thrive Approach as a whole school strategy to promote positive mental health and wellbeing of which when this is present in children's lives it has been proven to improve their attendance, behaviour and attainment.

This allows our children to become confident, curious, creative and capable, therefore opens doors to a bright future for our children.

If you would like any more information, please visit:  
[www.elacademy.org.uk/thrive-mental-health-wellbeing/](http://www.elacademy.org.uk/thrive-mental-health-wellbeing/)

**Mrs C Carratt**  
Pastoral Officer



**For information regarding mental health support & advice, please visit the below links:**

<https://wf-i-can.co.uk/u13/home/>

<https://www.compass-uk.org/services/wakefield-children-and-young-peoples-emotional-health-and-wellbeing-service/>

## Inclusion & SEND



At England Lane Academy we are committed to providing an inclusive education for all our children. This means that any child who may have Special Educational Needs or a Disability (SEND) will have access to additional or specialist support throughout their life at our academy. All teachers are responsible for every child in their care, including those with special educational needs and disabilities.

The Wakefield local offer website has a section dedicated to 'things to do'

A local event is the 'Elephant Club'. A weekly stay and play session for families of children with Special Educational Needs. For more information see the link below.

This is one of many events happening weekly across the district. For more events please see the link below.

<https://wakefield.mylocaloffer.org/>

**For further support, please contact a member of the Inclusion team:**

- Mrs H Cutler - SENDCo
- Mrs C Carratt - Pastoral Officer
- Miss C Milton - Designated Safeguarding Lead & Assistant Principal
- Mrs L Cooke - Head of Academy & Deputy Designated Safeguarding Lead